

Product Code	Description	Qty
8702331	Trial Spacer, 8°, 10×26×8	1
8702333	Trial Spacer, 8°, 10×26×10	1
8702335	Trial Spacer, 8°, 10×26×12	1
8702337	Trial Spacer, 8°, 10×26×14	1
8702351	Trial Spacer, 0°, 12×32×8	1
8702353	Trial Spacer, 0°, 12×32×10	1
8702355	Trial Spacer, 0°, 12×32×12	1
8702357	Trial Spacer, 0°, 12×32×14	1
8338041	T-Handle with Quick Coupling	1
8702015	Implant Case	1
8702016	Instrument Case	1



Optional Instruments

Product Code	Description
8702030	Trial Spacer, 3°, 10×22×7
8702032	Trial Spacer, 3°, 10×22×9
8702034	Trial Spacer, 3°, 10×22×11
8702036	Trial Spacer, 3°, 10×22×13
8702038	Trial Spacer, 3°, 10×22×15
8702040	Trial Spacer, 3°, 10×26×7
8702042	Trial Spacer, 3°, 10×26×9
8702044	Trial Spacer, 3°, 10×26×11
8702046	Trial Spacer, 3°, 10×26×13
8702048	Trial Spacer, 3°, 10×26×15
8702050	Trial Spacer, 8°, 10×22×7
8702052	Trial Spacer, 8°, 10×22×9
8702054	Trial Spacer, 8°, 10×22×11
8702056	Trial Spacer, 8°, 10×22×13
8702058	Trial Spacer, 8°, 10×22×15
8702330	Trial Spacer, 8°, 10×26×7
8702332	Trial Spacer, 8°, 10×26×9

Product Code	Description
8702334	Trial Spacer, 8°, 10×26×11
8702336	Trial Spacer, 8°, 10×26×13
8702338	Trial Spacer, 8°, 10×26×15
8702340	Trial Spacer, 0°, 12×26×7
8702341	Trial Spacer, 0°, 12×26×8
8702342	Trial Spacer, 0°, 12×26×9
8702343	Trial Spacer, 0°, 12×26×10
8702344	Trial Spacer, 0°, 12×26×11
8702345	Trial Spacer, 0°, 12×26×12
8702346	Trial Spacer, 0°, 12×26×13
8702347	Trial Spacer, 0°, 12×26×14
8702348	Trial Spacer, 0°, 12×26×15
8702350	Trial Spacer, 0°, 12×32×7
8702352	Trial Spacer, 0°, 12×32×9
8702354	Trial Spacer, 0°, 12×32×11
8702356	Trial Spacer, 0°, 12×32×13
8702358	Trial Spacer, 0°, 12×32×15



www.botec-med.com

© 2021-C

SHANGHAI
Room 505, 768 Xie Tu Rd. Huangpu District
Shanghai China PRC -200023
T (8621) 6386 1008 / 6386 1009
F (8621) 6386 1017

WUXI
9-8 Jingrui Rd, Industrial Concentration District, Zhangjing, Xibei Town,
Xishan District, Wuxi, Jiangsu Province, China 214194
T (86510) 8379 7697 / 8379 1620
F (86510) 8379 7697 / 8379 3622



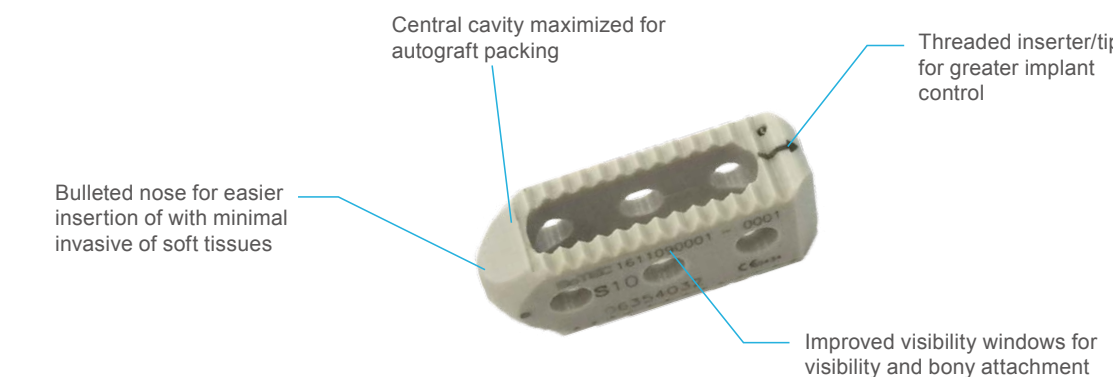
Acorn PLIF PEEK Cage System Surgical Technique

... Inspired for Life

Product Introduction

The ACORN PEEK Cage Systems restore the disc height and provide the stability during and after the bone fusion period. The three dimensional reconstruction helps to improve the load sharing of the anterior and posterior spinal column and restore anatomic kyphosis/lordosis. The systems also provide varying shape and size configurations to match different anatomy.

ACORN PLIF PEEK Cage



Designed for posterior interbody fusion procedure:

- Footprint: 10x22mm, 10x26mm, 12x32mm
- Lordosis: 0°, 3°, 8°
- Height: 8-14mm (2 mm increment)

Footprint / Lordotic Angulation	0°	3°	8°
10x22	NA	8,10,12,14mm	8,10,12,14mm
10x26	NA	8,10,12,14mm	8,10,12,14mm
12x32	8,10,12,14mm	NA	NA

INDICATIONS AND CONTRAINDICATIONS

INTENDED USE

The ACORN PLIF Cage is intended to replace lumbar intervertebral discs and to fuse the adjacent vertebral bodies together at vertebral levels L1–S1. The implant is designed for a posterior approach.

INDICATIONS

- Indications are lumbar and lumbosacral pathologies in which segmental spondylolysis is indicated, for example:
- Degenerative disc diseases and spinal instabilities
 - Revision procedures for post-discectomy syndrome
 - Pseudarthrosis or failed spondylolysis
 - Degenerative spondylolisthesis
 - Isthmic spondylolisthesis

CONTRAINDICATIONS

- Vertebral body fractures
- Spinal tumours
- Primary spinal deformities
- Osteoporosis

Surgical Technique

1. PATIENT POSITIONING

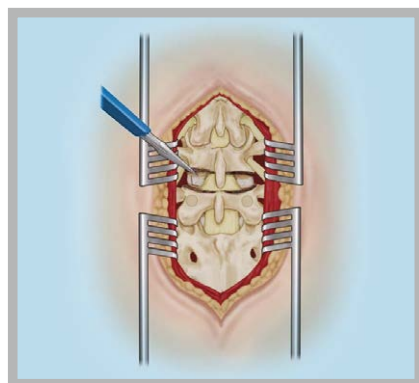
Position the patient in a restored posterior physiological lordosis.



2. LAMINOTOMY, FACETECTOMY AND DISCECTOMY

- A conventional discectomy is performed by incising the annulus with a 15-scalpel blade lateral to the dural sac.
- This is done bilaterally and then soft fragments from the intradiscal space or extruded fragments are removed with Disc Rongeurs in a conventional fashion.

The main goal of this step is to remove extruded fragments, to decompress neural elements, and to provide entry to the disc space for distraction with minimal or no nerve root retraction. If there is significant disc space collapse, a complete discectomy may not be possible until disc space distraction is accomplished.



3. DISC SPACE PREPARATION

Remove disc using the Bone Cutters. This Cutters are blunt tipped and side cutting to improve safety. A T-handle or a handheld power drill may be used for more efficient removal of disc.



4. ENDPLATE PREPARATION

Remaining soft tissue or cartilaginous endplate is removed with vigorous scraping or curettage. Scrape medially under the midline and gradually work laterally in a sweeping motion until both caudal and cephalad endplates are cleared of soft tissue. The removal of the soft tissue from the endplate surface allows optimal graft incorporation.



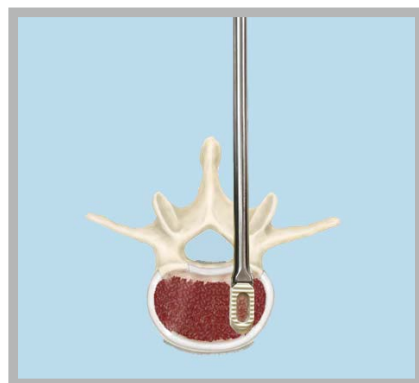
5. TRIAL INSERTION

Insert trial until desired disc space height is established.



6. INSERT CONSTRUCT

- The appropriate size construct is chosen from the trialing step.
- The appropriate size construct is firmly attached to the inserter.
- Before inserting the construct, place autograft anteriorly.
- Gently impact it until it is 3 to 4mm below the posterior margin of the annulus.
- Care should be taken to ensure the construct is aligned properly.



7. FINAL PLACEMENT

- After the final construct is placed, the extradural space and foramina are probed to ensure adequate decompression of the neural elements.
- To facilitate satisfactory immobilization of the grafted interspace, segmental internal fixation is applied using standard technique.



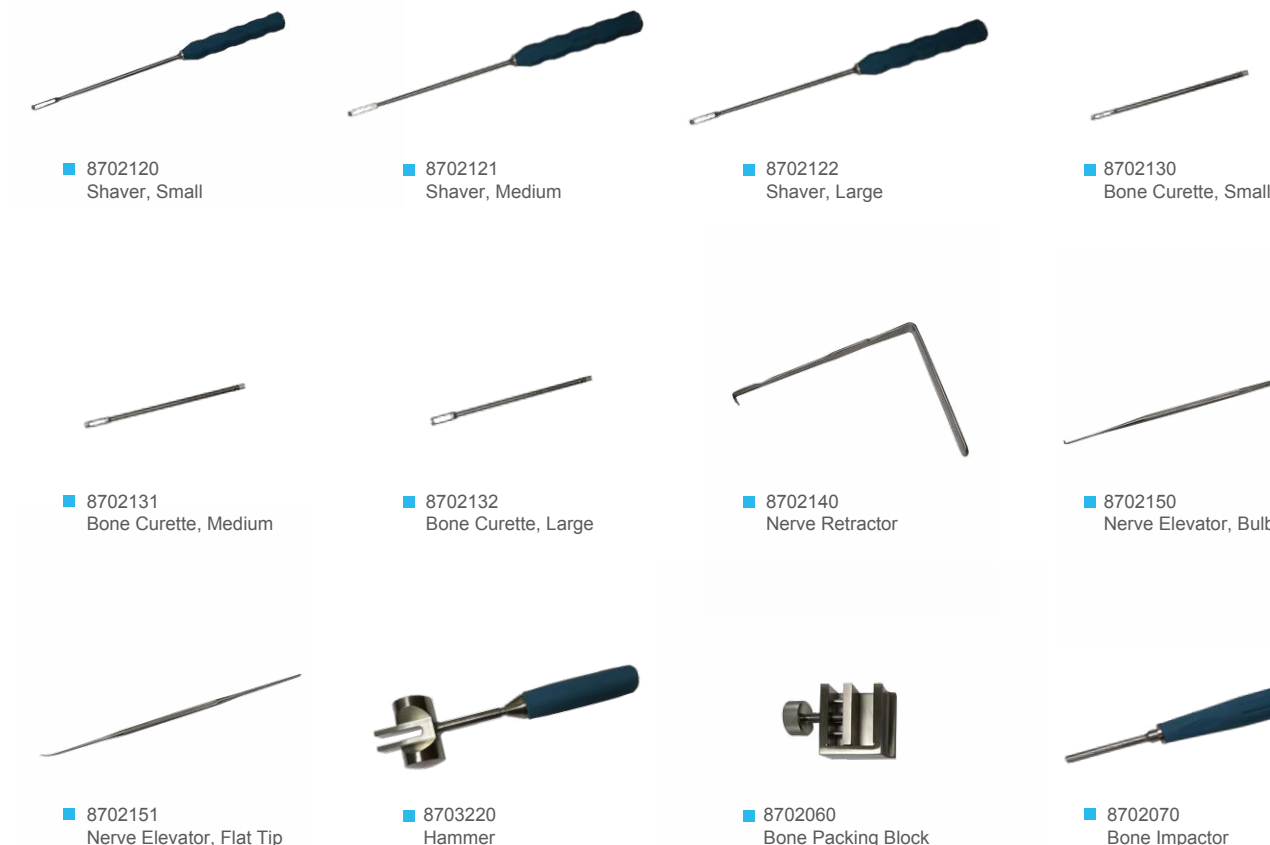
Product Profolio

■ ACORN PLIF PEEK Cage



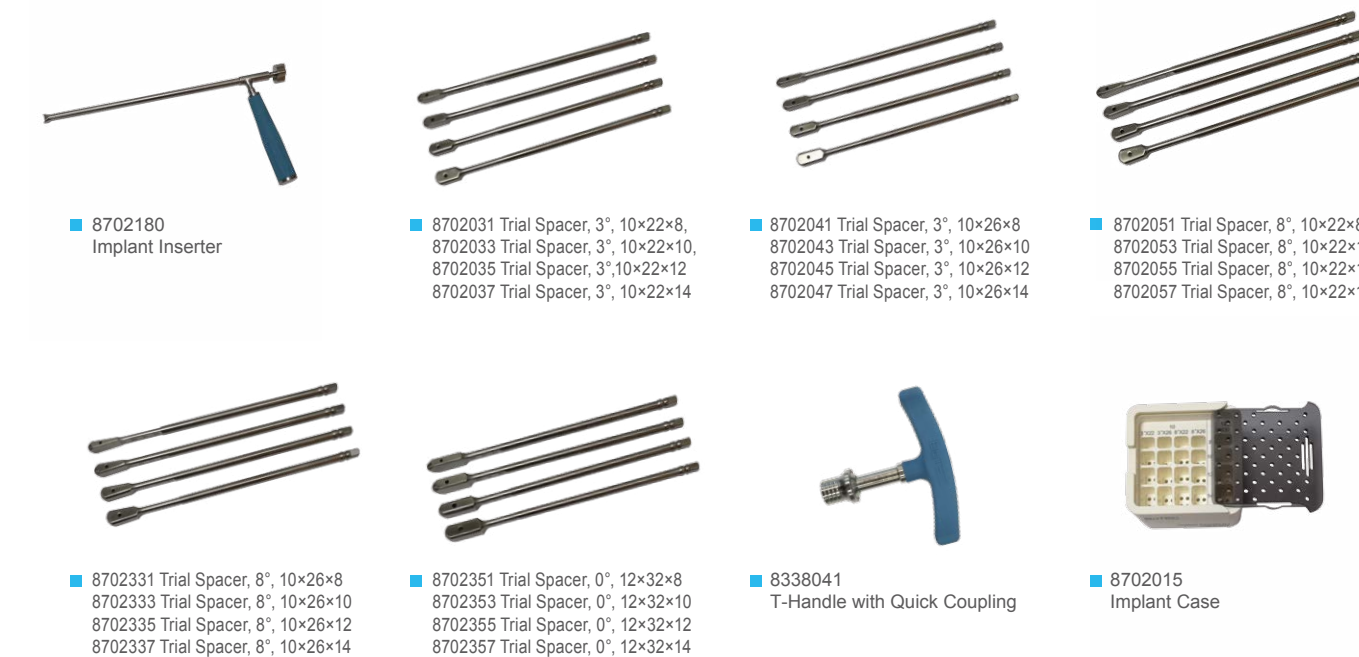
Code	Angle	Specification Width*Length*Height
9906342322	3°	10×22× 8
9906344322	3°	10×22×10
9906346322	3°	10×22×12
9906348322	3°	10×22×14
9906342326	3°	10×26× 8
9906344326	3°	10×26×10
9906346326	3°	10×26×12
9906348326	3°	10×26×14
9906342822	8°	10×22× 8
9906344822	8°	10×22×10
9906346822	8°	10×22×12
9906348822	8°	10×22×14

Code	Angle	Specification Width*Length*Height
9906342826	8°	10×26× 8
9906344826	8°	10×26×10
9906346826	8°	10×26×12
9906348826	8°	10×26×14
9906352026	0°	12×26× 8
9906354026	0°	12×26×10
9906356026	0°	12×26×12
9906358026	0°	12×26×14
9906352032	0°	12×32× 8
9906354032	0°	12×32×10
9906356032	0°	12×32×12
9906358032	0°	12×32×14



- 8702120 Shaver, Small
- 8702121 Shaver, Medium
- 8702122 Shaver, Large
- 8702130 Bone Curette, Small
- 8702131 Bone Curette, Medium
- 8702132 Bone Curette, Large
- 8702140 Nerve Retractor
- 8702150 Nerve Elevator, Bulb Tip
- 8702151 Nerve Elevator, Flat Tip
- 8703220 Hammer
- 8702060 Bone Packing Block
- 8702070 Bone Impactor

Grey background products are unconventional stock which may extend the lead time.



- 8702180 Implant Inserter
- 8702031 Trial Spacer, 3°, 10×22×8
- 8702033 Trial Spacer, 3°, 10×22×10
- 8702035 Trial Spacer, 3°, 10×22×12
- 8702037 Trial Spacer, 3°, 10×22×14
- 8702041 Trial Spacer, 3°, 10×26×8
- 8702043 Trial Spacer, 3°, 10×26×10
- 8702045 Trial Spacer, 3°, 10×26×12
- 8702047 Trial Spacer, 3°, 10×26×14
- 8702051 Trial Spacer, 8°, 10×22×8
- 8702053 Trial Spacer, 8°, 10×22×10
- 8702055 Trial Spacer, 8°, 10×22×12
- 8702057 Trial Spacer, 8°, 10×22×14
- 8702331 Trial Spacer, 8°, 10×26×8
- 8702333 Trial Spacer, 8°, 10×26×10
- 8702335 Trial Spacer, 8°, 10×26×12
- 8702337 Trial Spacer, 8°, 10×26×14
- 8702351 Trial Spacer, 0°, 12×32×8
- 8702353 Trial Spacer, 0°, 12×32×10
- 8702355 Trial Spacer, 0°, 12×32×12
- 8702357 Trial Spacer, 0°, 12×32×14
- 8338041 T-Handle with Quick Coupling
- 8702015 Implant Case

ACORN PLIF PEEK Cage Instrument Set 8702000

Product Code	Description	Qty
8702120	Shaver, Small	1
8702121	Shaver, Medium	1
8702122	Shaver, Large	1
8702130	Bone Curette, Small	1
8702131	Bone Curette, Medium	1
8702132	Bone Curette, Large	1
8702140	Nerve Retractor	1
8702150	Nerve Elevator, Bulb Tip	1
8702151	Nerve Elevator, Flat Tip	1
8702170	Trial Spacer Quick Coupling Handle	2
8703220	Hammer	1
8702060	Bone Packing Block	1
8702070	Bone Impactor	1
8702180	Implant Inserter	1
8702031	Trial Spacer, 3°, 10×22×8	1
8702033	Trial Spacer, 3°, 10×22×10	1
8702035	Trial Spacer, 3°, 10×22×12	1
8702037	Trial Spacer, 3°, 10×22×14	1
8702041	Trial Spacer, 3°, 10×26×8	1
8702043	Trial Spacer, 3°, 10×26×10	1
8702045	Trial Spacer, 3°, 10×26×12	1
8702047	Trial Spacer, 3°, 10×26×14	1
8702051	Trial Spacer, 8°, 10×22×8	1
8702053	Trial Spacer, 8°, 10×22×10	1
8702055	Trial Spacer, 8°, 10×22×12	1
8702057	Trial Spacer, 8°, 10×22×14	1